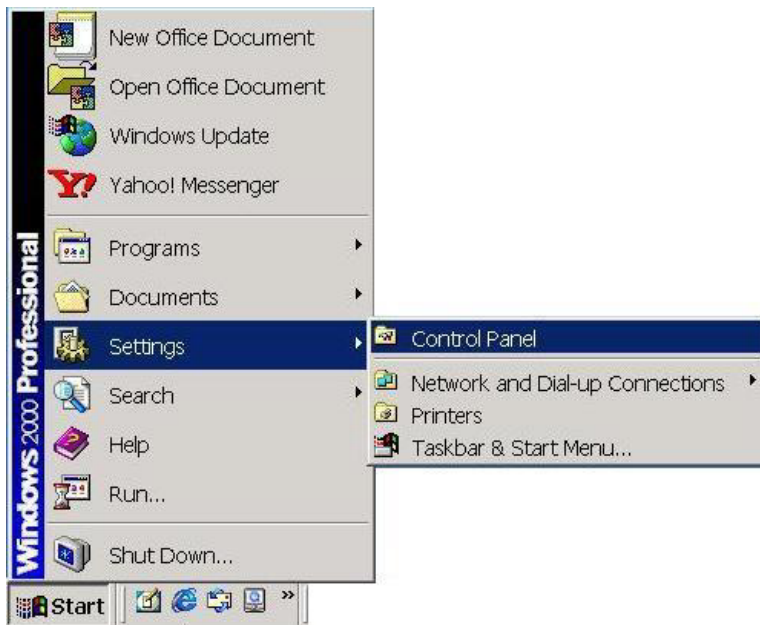


# Configuring your Win 2000 Machine for DHCP

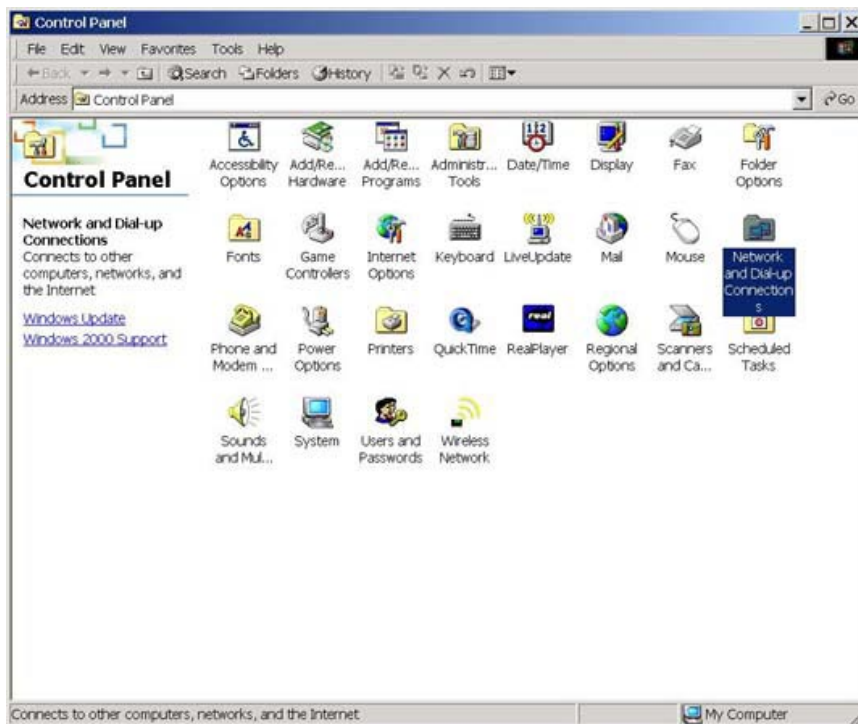
---

## 1. Open the Control Panel Folder



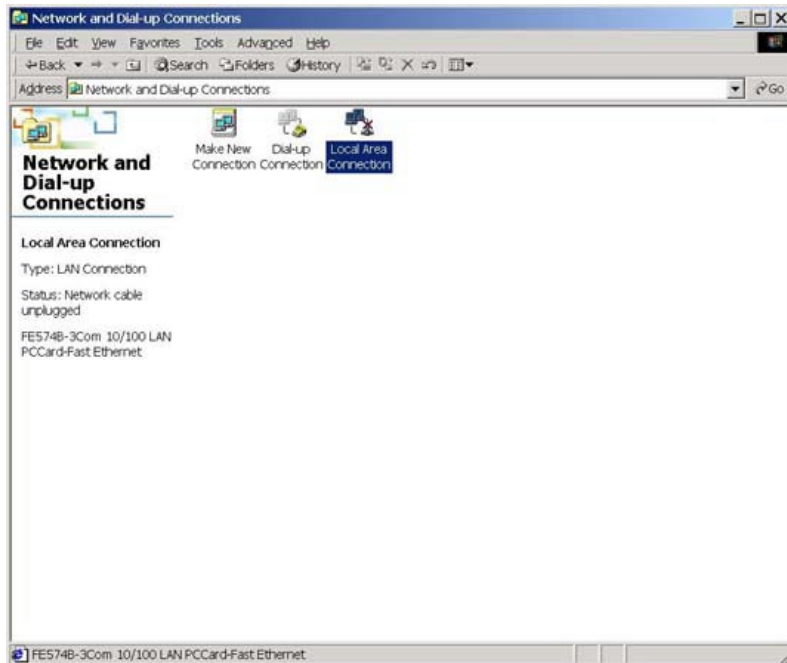
Go to the Start Button, then up to Settings, and across to Control Panel as shown above.

## 2. Open the Networking Control Panel



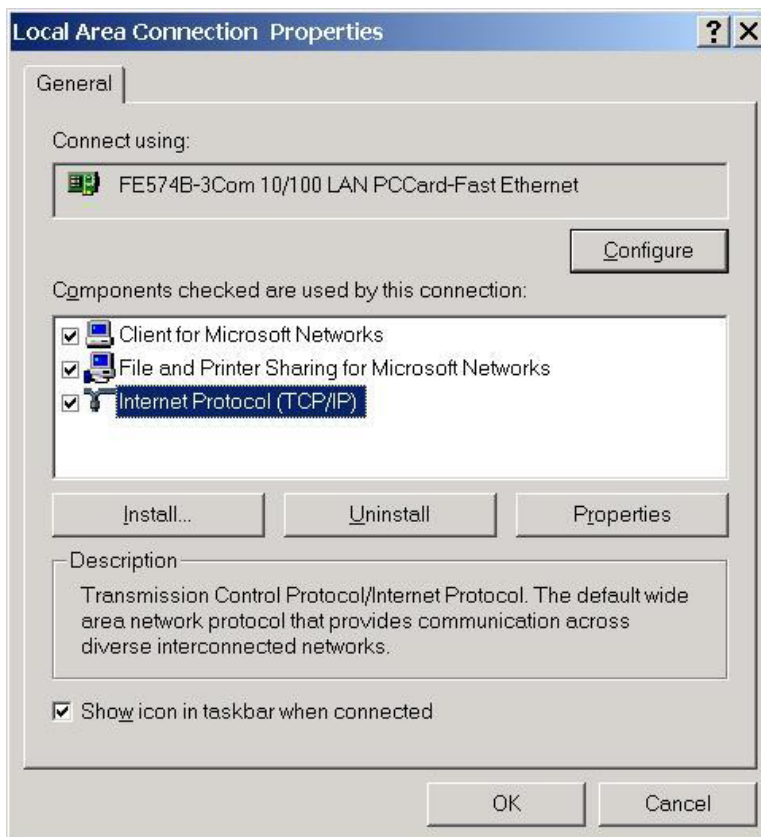
Double click on the icon that says "Network and Dial-up Connections".

### 3. Open the Local Area Connection Properties



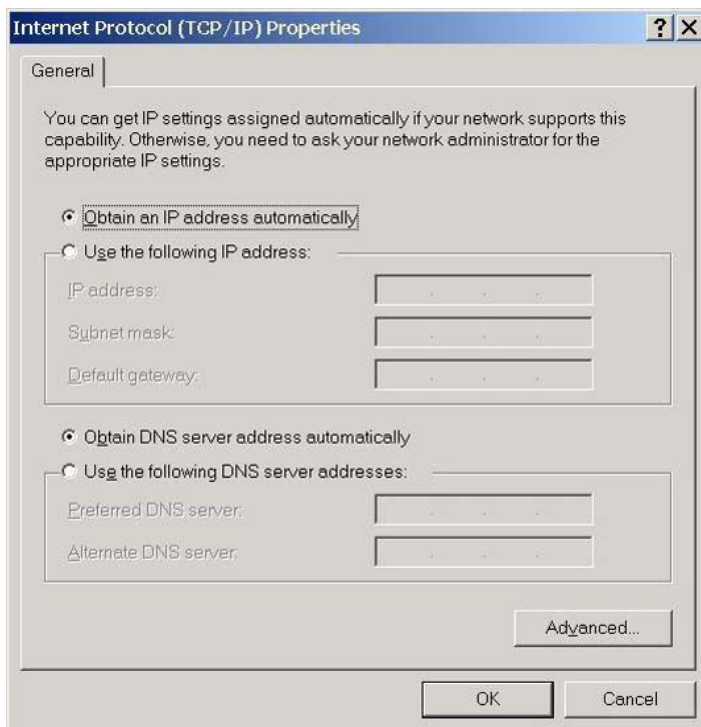
Double Click on the icon that says "Local Area Connection".

### 4. Open TCP/IP Configuration for Your Ethernet Card



In the "General" tab, you will need to double click on the Component that reads, "Internet Protocol (TCP/IP)". This is shown above.

## 5. Obtain an IP Address Automatically



From the "General" tab, select "Obtain an IP address automatically" by clicking on the white circle to the left of that choice. You will also need to select "Obtain DNS server address automatically" by clicking the appropriate circle as shown above.

## 6. Make the Changes Take Affect

- a. Click OK on the "Internet Protocol (TCP/IP) Properties" screen.
- b. Click OK on the "Local Area Connection Properties" Screen.
- c. Click OK when asked to restart your computer.

## 7. You Are DONE!