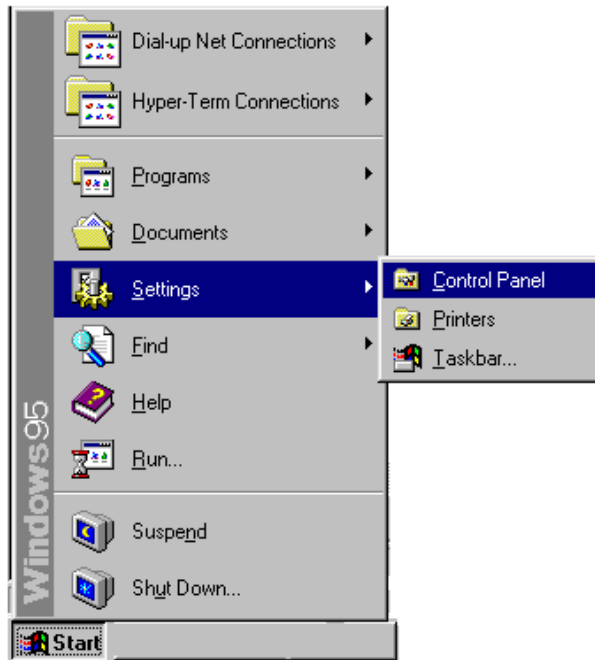


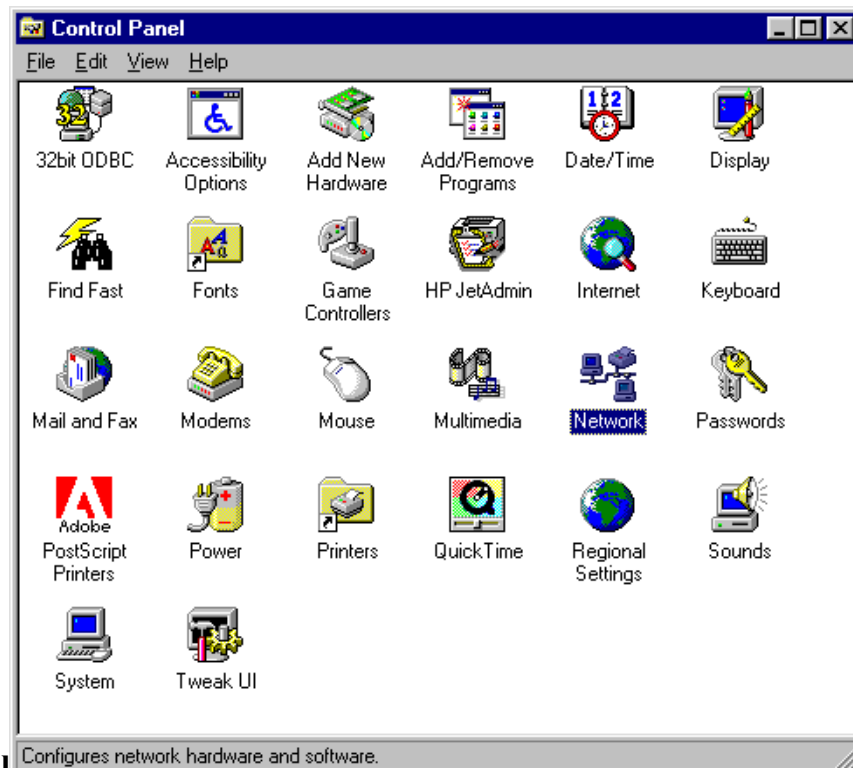
Configuring your Win 95/98/NT Machine for DHCP

1. Open the Control Panel Folder



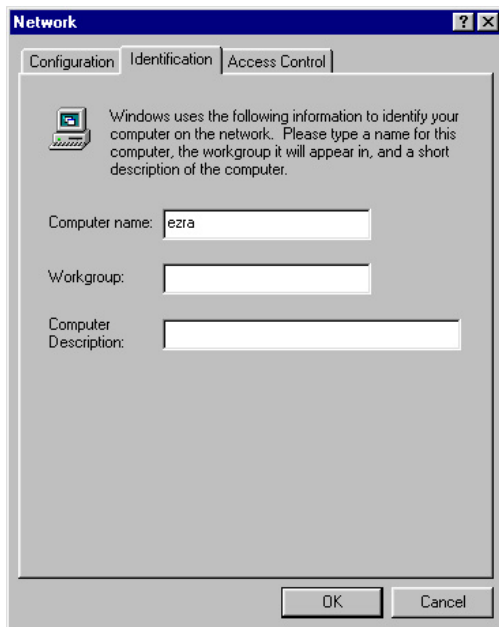
Go to the Start Button, then up to Settings, and across to Control Panel as shown above.

2. Open the Networking Control Panel



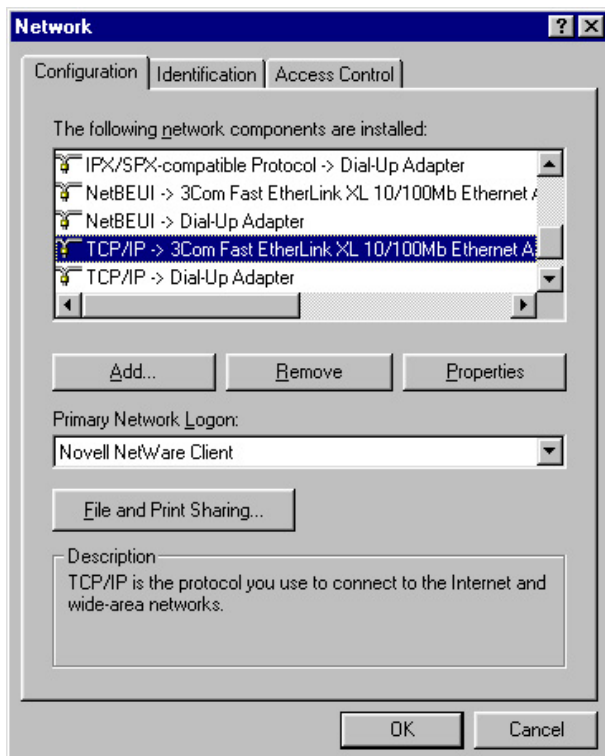
Double click on the icon that says "Network".

3. Find your Computer Name



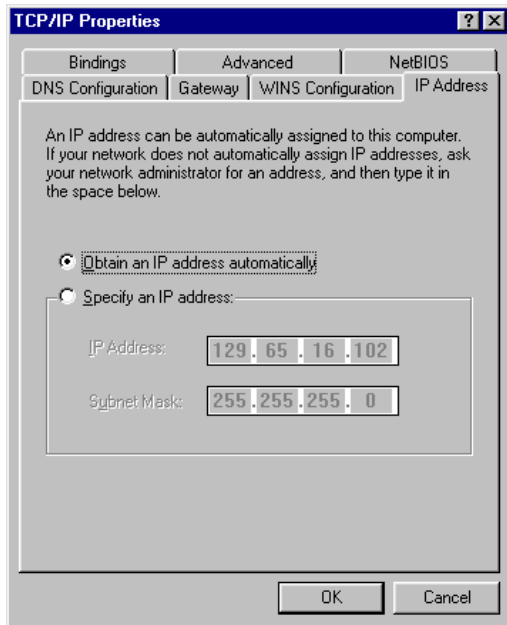
In the "Identification" tab, find what is listed as your "Computer Name". The Computer Name should be one word, all lowercase with no special characters, such as: ?<>^)(*@#\$\$%&=!, etc... Write this down because the exact name will be needed in a later step (ezra is just an example).

4. Open TCP/IP Configuration for Your Ethernet Card



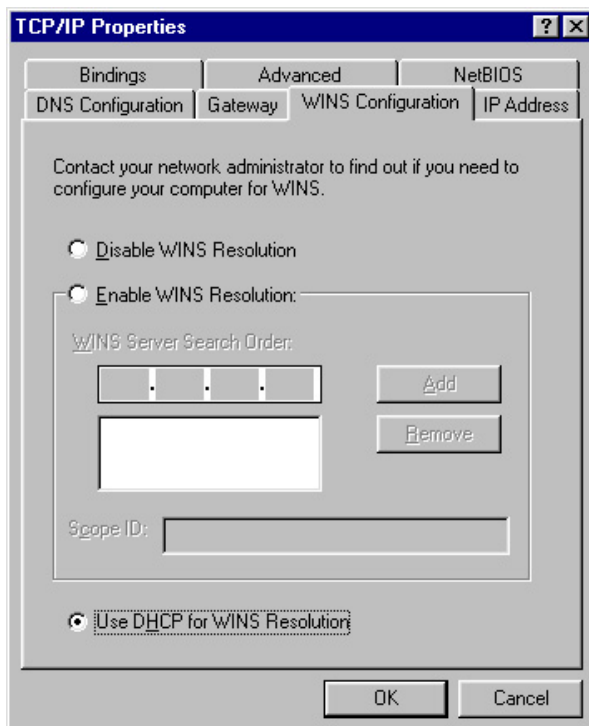
In the "Configuration" tab, scroll down to your TCP/IP configuration for your Ethernet card. Double click on that choice. (It will look similar to the blue bar in the picture above. Any differences will be due to different types of Ethernet cards.)

5. Obtain an IP Address Automatically



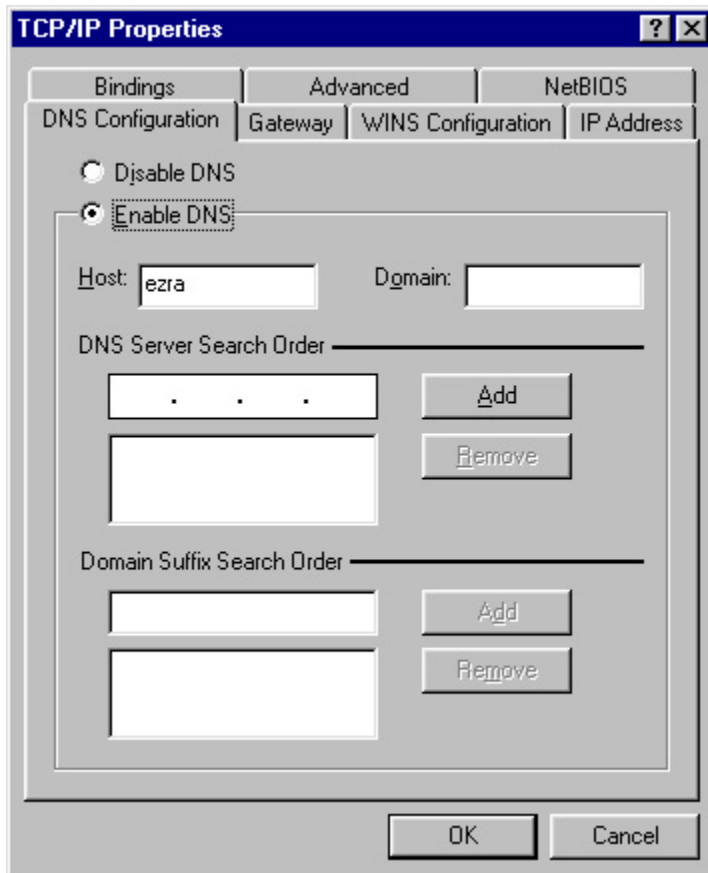
From the "IP Address" tab, select "Obtain an IP address automatically" by clicking on the white circle to the left of that choice.

6. Enable WINS Resolution via DHCP



Click on the "WINS Configuration" Tab. From there make sure that the "Use DHCP for WINS Resolution" is the ONLY thing that is selected.

7. Enable DNS and Configure Host Name



Click on the "DNS Configuration" Tab. Select "Enable DNS". Next, type in your "Computer Name" from Step 3 into the "Host" field.

8. Make the Changes Take Affect

- a. Click OK on the "TCP/IP Properties" screen.
- b. Click OK on the "Network" Screen.
- c. Click OK when asked to restart your computer.

9. You Are DONE!