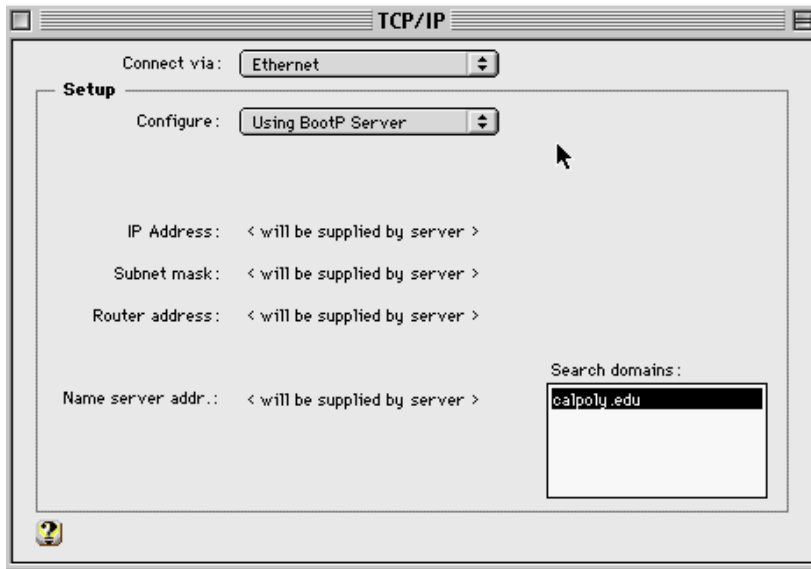


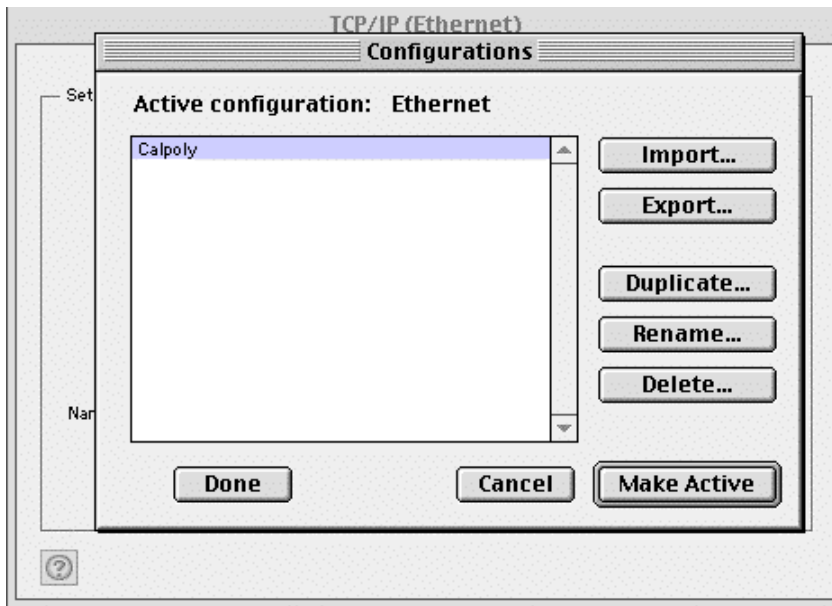
## Configuring your Mac for DHCP

1. Open your control panels. (located in the apple menu bar in the upper left corner)
2. Double click "TCP/IP" (it should look something like this)

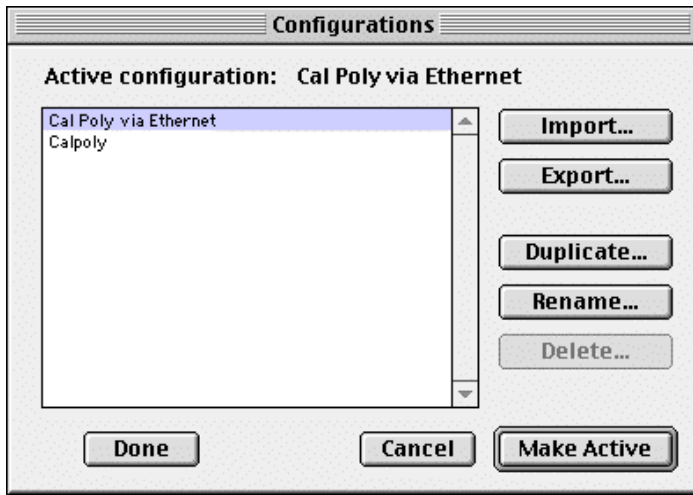


3. If you do not have a modem in your laptop computer, or do not use your modem for web access skip to step 4, otherwise continue.

3a. click on the file menu and select "configurations". (Your screen should look something like this)

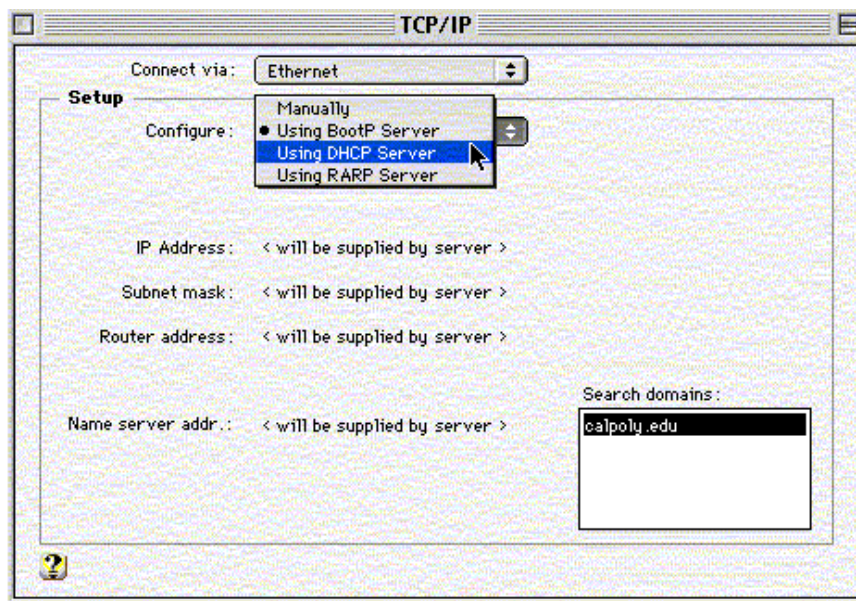


3b. Click on the duplicate button to make a copy of your Cal Poly Connection preferences. Click on rename and name the new preferences "Calpoly via Ethernet". Click on "Make Active" so that the changes you will be making (in step 4) will be saved to your new configuration (Cal Poly via Ethernet). When you wish to switch back to a modem connection, use this screen to Toggle between the configurations.



4. Next, be sure that the "Connect via: " says "Ethernet" If not then click on the pull down bar and pick "Ethernet"

4a. Change "Configure" to "Using DHCP Server" by clicking on the pull down bar of Configure. (as shown below)



4b. NOTE: On some Mac OS (i.e. 9), an additional parameter in the above screen called "DHCP Client ID" can be set. This must be set to the SAME name as your computer's name, as found in: Control Panels -> File Sharing -> Computer Name. The Computer Name should be all lowercase with no special characters, such as: ?<>^)(\*@#\$\$%&=!, etc...

4c. Check to see if "calpoly.edu" is in the "Search domains:" box. If not then add "calpoly.edu" without the quotes.

5. Make sure you save changes. On most Mac OS's your new DHCP address will become active as soon as you initiate network activity, otherwise you may need to restart your computer.

6. YOU ARE DONE!